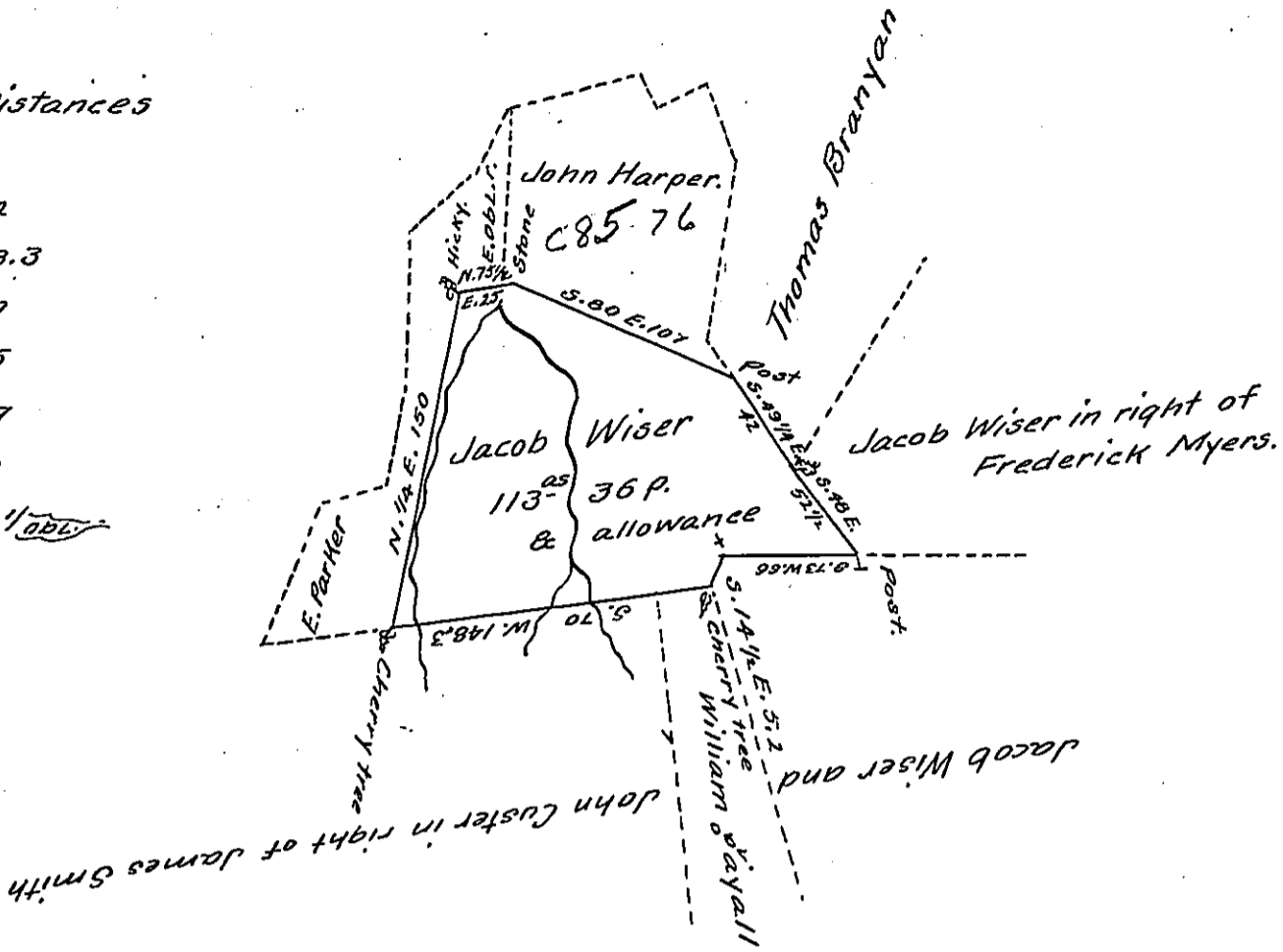


Courses & Distances

- S. 73. W. 66
- S. 14 1/2 E. 5.2
- S. 70 W. 148.3
- N. 1/4 E. 150
- N. 75 1/2 E. 25
- S. 80 E. 107
- S. 49 1/4 E. 42

obliterated 52' ^{abd}



Draft of a tract of land situate in Penn Township (formerly Rye) Perry County (formerly Cumberland) containing one hundred and Thirteen acres thirty six perches and allowance of Six per Cent for roads &c. Part of a larger tract Originally Surveyed on a warrant granted to Frederick Hayle dated August 19th 1774. The above part Surveyed for Jacob Wiser the owner to Patent August 14th 1848.

Pr. Wm Wilson, D. S.

John Laporte Esq.

Surveyor General of Pa

IN TESTIMONY that the above is a copy of the original remaining on file in the Department of Internal Affairs of Pennsylvania, made conformably to an Act of Assembly approved the 16th day of February, 1833, I have hereunto set my Hand and caused the Seal of said Department to be affixed at Harrisburg, this twentieth day of July 1905.

George B. Brown
Secretary of Internal Affairs.